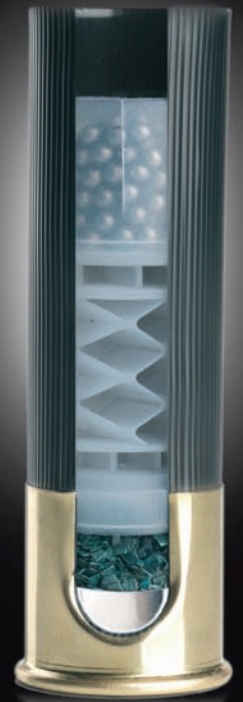


F2 POWER



POWER INGREDIENTS

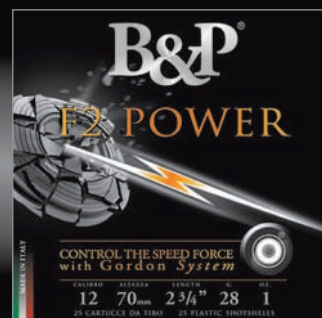
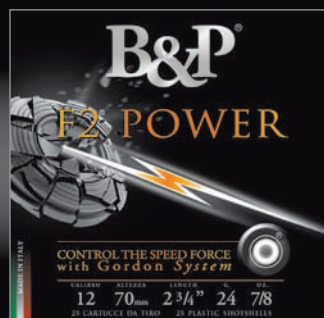
- ⚡ F2 POWDER
- ⚡ PRE-CUT WAD: ORIGINAL B&P DESIGN
- ⚡ PELLETS WITH 5% ANTIMONY
- ⚡ GORDON SYSTEM: THE REAL "SHOCK ABSORBER"

POWER RESULTS

- ⚡ BLISTERING SPEED
- ⚡ TIGHT AND HOMOGENEOUS SHOT PATTERN DISTRIBUTION
- ⚡ OPTIMAL CLAY TARGET BREAKING
- ⚡ MAXIMUM COMFORT

Thanks to the the special functionality of Gordon System, F2 POWER guarantees the perfect balance between velocity, power and comfort. The components blend allows F2 POWER to be the fastest cartridge of the Baschieri & Pellagri range.

EXPERIENCE THE BEST PERFORMANCE WITHOUT COMPROMISE.



Cartridge	Gauge	Head Brass	Case		Type	Powder	Wad	Lead			Velocity	Box
		mm.	mm.	inch.				G	OZ.	N°		
F2 POWER 24	12	20	70	2 3/4	G	F2X24	PC	24	7/8	7,5	435 m/s	25/250
F2 POWER 28	12	20	70	2 3/4	G	F2X28	PC	28	1	7,5	425 m/s	25/250